

N.E. 1/4 OF
SECTION 5, T.6N., R.1W., S.L.B. & M.

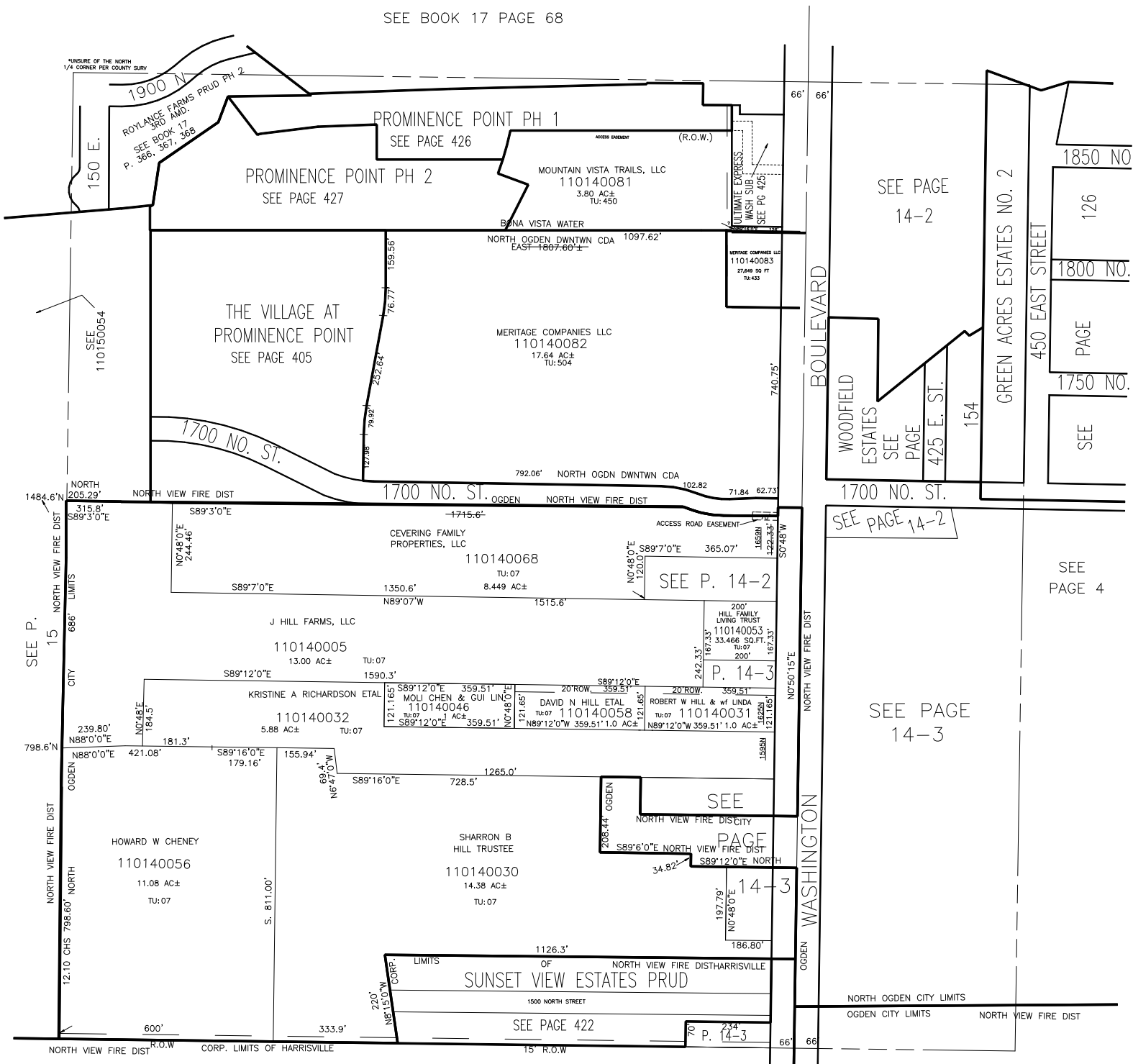
IN NORTH OGDEN CITY, HARRISVILLE CITY, NORTH OGDEN DISTRICT

TAXING UNIT: 7, 10, 12, 433, 450, 504

SCALE 1" = 200'

ALSO SEE PAGES 14-2, 14-3

SEE BOOK 17 PAGE 68



SEE PAGE 16